

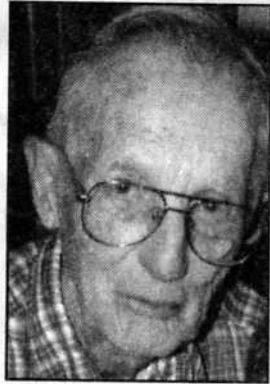
Verlyn Lavern Olson Sr.

February 4, 1929 – February 6, 2011

A funeral service for Verlyn Lavern Olson Sr., 82, will be held at 2:00 P.M. Thursday, February 10, 2011 at the Gorman Funeral Homes – Platte Chapel in Wheatland with Pastor Aaron Bell officiating. Military honors will be accorded by Laramie Peak VFW Post # 3358 and Ora Call American Legion Post #10.

Verlyn Olson a resident of Wheatland died Sunday, February 6, 2011 at the Veterans Administration Regional Medical Center in Cheyenne, Wyoming.

He was born February 4, 1929 in Viroqua, Wisconsin the son of Lindahl Elmer and Doris Lavera (Stephen) Olson. He was raised and educated in Westby, Wisconsin. He joined the United States Army on December 21, 1948 and was discharged on December 31, 1969 as a Master Sergeant. He proudly served his country for 21 years. He was married to Elwira Martin on November 23, 1954 in Ludwigsburg, Germany living in various duty stations in the United States and overseas. They retired to Indianapolis, Indiana; but, moved to Wyoming after a visit, they liked it so well. They settled in Cheyenne for a few years before moving to Wheatland in 1988. He enjoyed traveling in his motor home, making wine, and working around in his yard and home. Some of his other enjoyments



Verlyn Olson Sr.

were going to the mountains, fishing, spending time with his grandchildren and great grandchildren, and his Bulldogs and Dachshunds.

He is survived by his children, Katherine (Jim) Raquet of Cheyenne, Rosemarie (Robert) Russell of Scottsbluff, Nebraska, Evelyn (Henry) Kessinger of Butlerville, Indiana, and Verlyn L. Olson Jr. of Wheatland; six grandchildren; four step grandchildren; and fifteen great grandchildren.

He was preceded in death by his parents; wife, Elwira Olson, on October 6, 2008; siblings, Frederick Olson, Kenneth Olson, and Avanelle Wenck; one granddaughter; and one great grandson.

A memorial to the Disabled American Veterans in care of the DAV Memorial Program, P.O. Box 14301, Cincinnati, Ohio 45250-0301 would be appreciated by the family.

Family and friends may call at the funeral home Wednesday from 10:00 A.M. to 7:00 P.M. and on Thursday from 9:00 A.M. to 2:00 P.M.

Arrangements are under the direction of Gorman Funeral Homes – Platte Chapel of Wheatland.

Condolences may be left for the family at www.gormanfh.com.